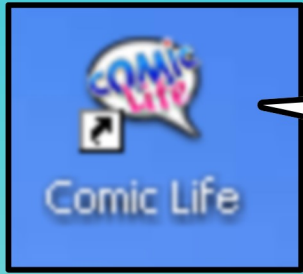
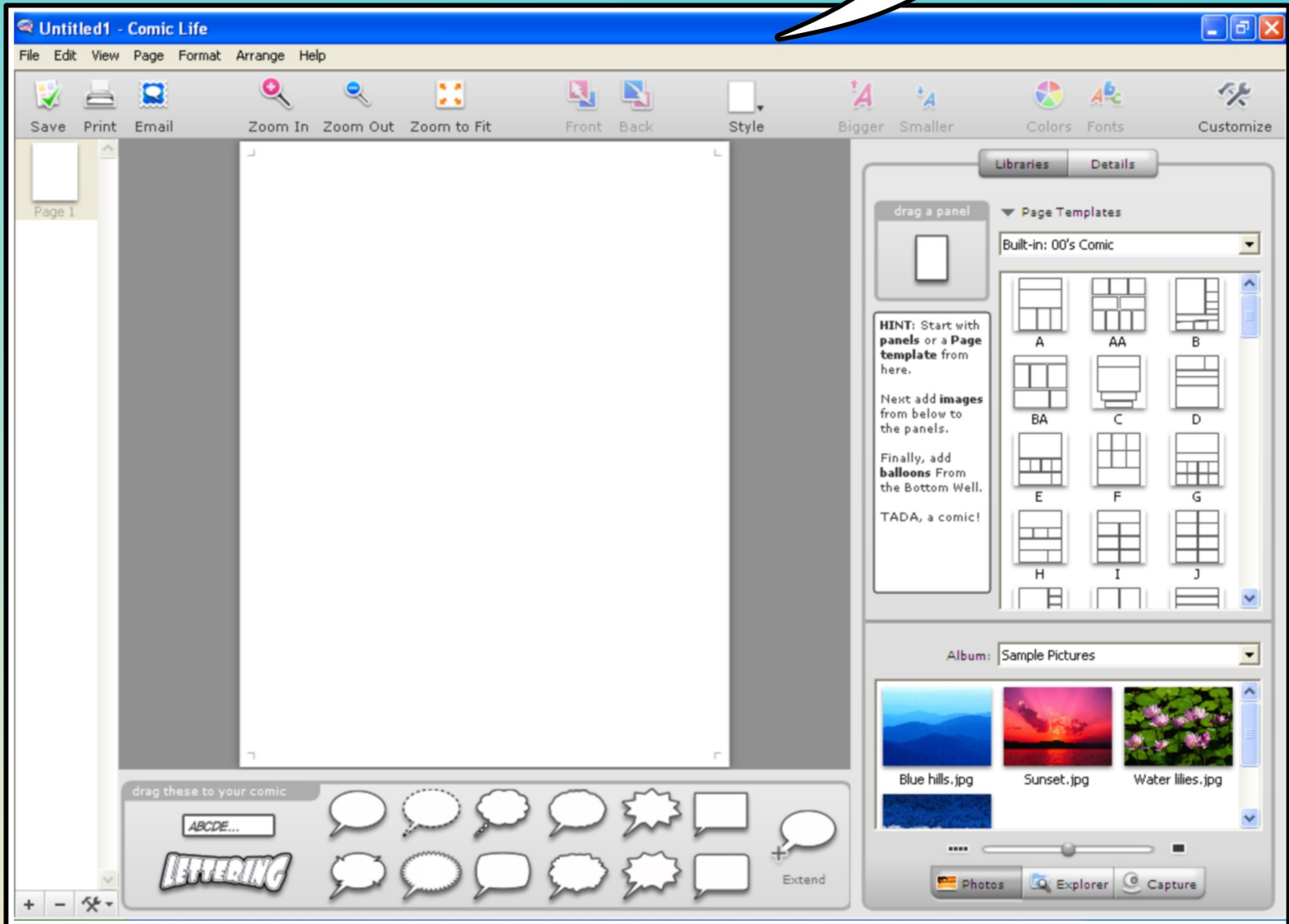


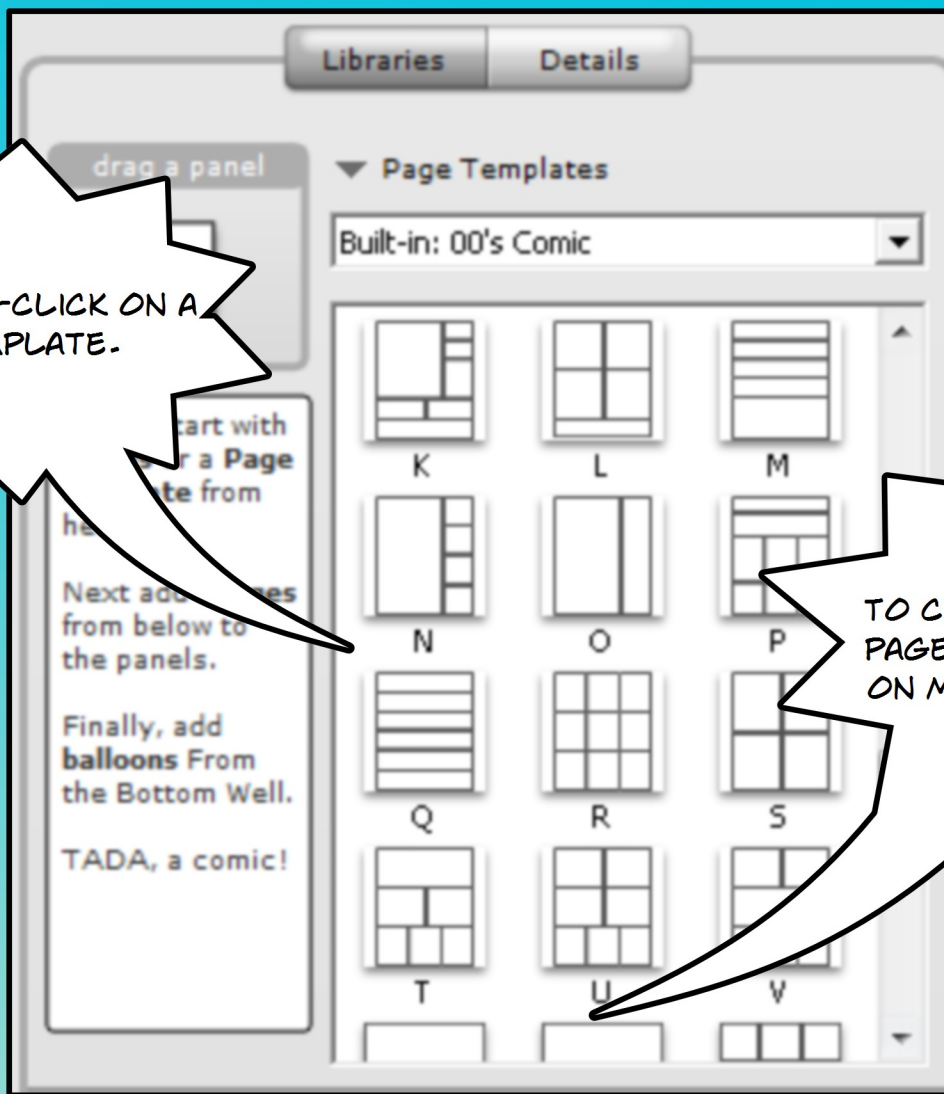
HOW TO USE COMIC LIFE



LOCATE ICON FROM DESKTOP. DOUBLE-CLICK TO START.

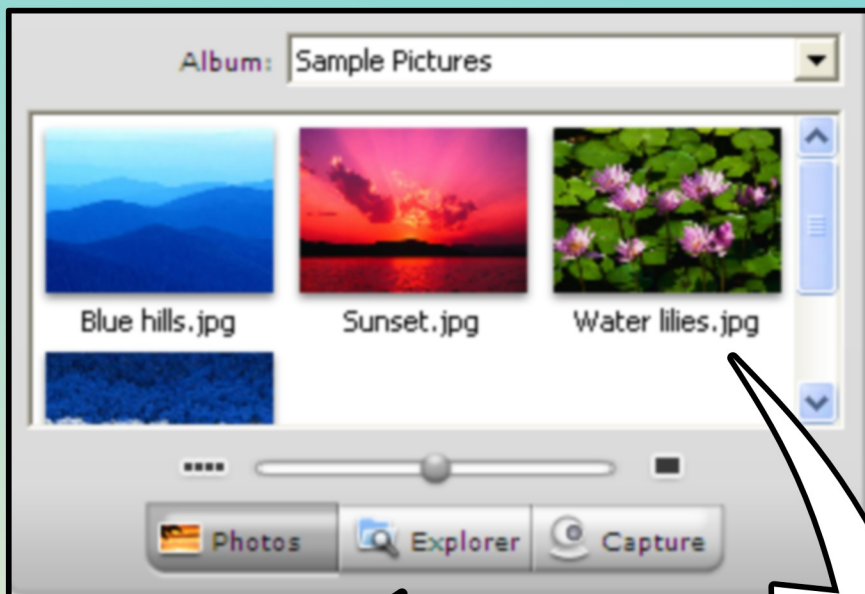
NOW YOU ARE READY TO BEGIN!





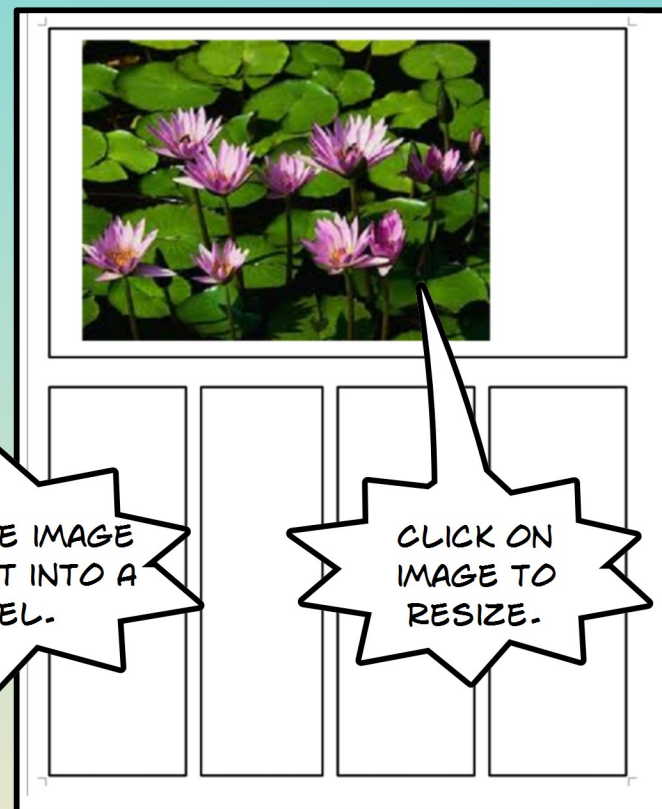
DOUBLE-CLICK ON A
TEMPLATE.

TO CREATE ADDITIONAL
PAGES. DOUBLE-CLICK
ON MORE TEMPLATES.



TO ADD IMAGES, SEARCH
THROUGH PHOTO ALBUMS.

DRAG THE IMAGE
YOU WANT INTO A
PANEL.



CLICK ON
IMAGE TO
RESIZE.

Libraries

Details

Image Attributes

Maintain Aspect Ratio

Flip: Horizontal Vertical

Lock

Clip

Style Attributes

Style:



Revert

Update

Save as...

Filter:

Invert

Colorize



Frame



Width

Shadow

Offset



Blur



CLICK ON
DETAILS TO
EDIT IMAGE
STYLE.

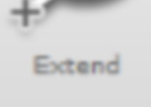
CLICK ON STYLE TO
CHANGE IMAGE
STYLE.

CLICK AND DRAG A TEXT
BUBBLE ONTO THE PAGE
LAYOUT.

drag these to your comic

ABCDE...

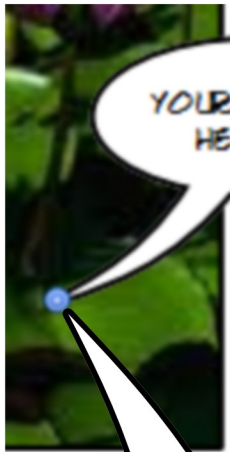
LETTERING



Extend



YOUR WORDS
HERE...



YOUR WORDS
HERE...

CLICK AND DRAG
THE BLUE CIRCLE
AT THE BOTTOM
OF THE BUBBLE'S
CORNER.



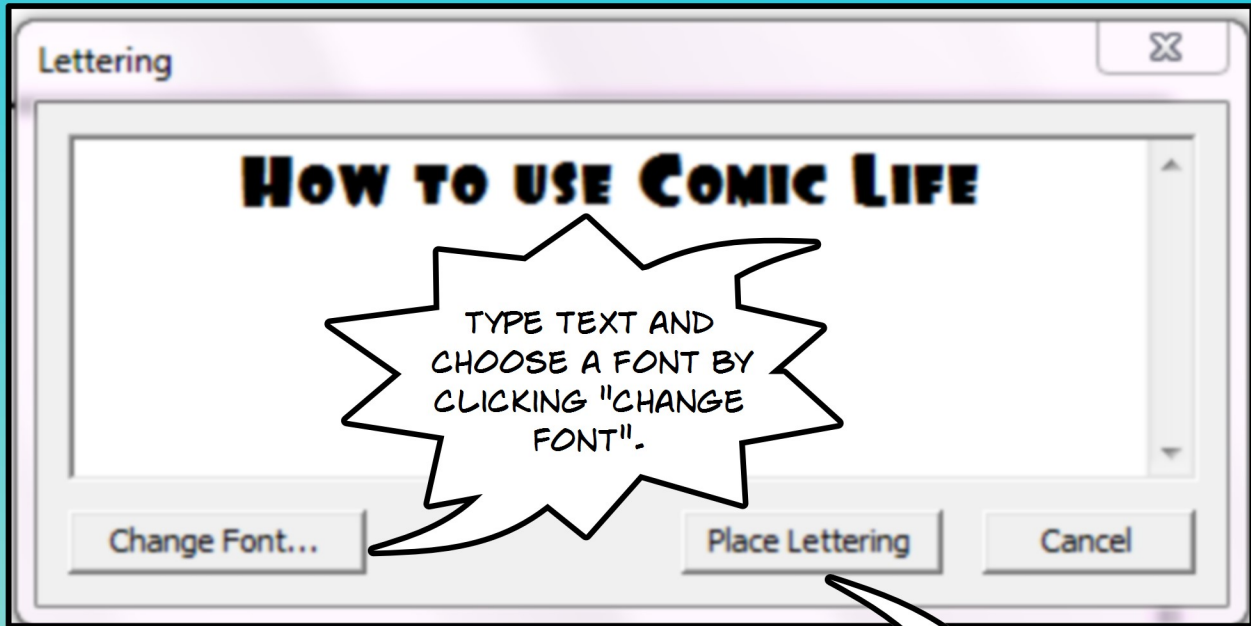
YOUR WORDS
HERE...

CLICK ON THE
BUBBLE AND USE
THE GREEN
SQUARE TO
RESIZE IT.

TYPE IN YOUR TEXT &
MOVE BUBBLE TO
DESIRED LOCATION.

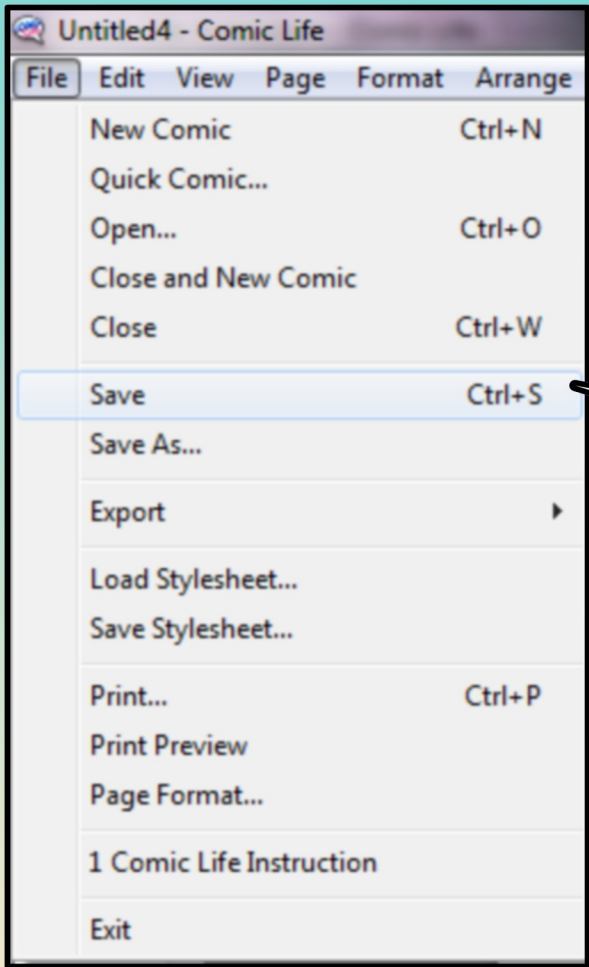


DRAG THE LETTERING ICON TO THE PAGE LAYOUT.



TYPE TEXT AND CHOOSE A FONT BY CLICKING "CHANGE FONT".

WHEN DONE, CLICK "PLACE LETTERING".



SAVE THE COMIC LIFE FILE.